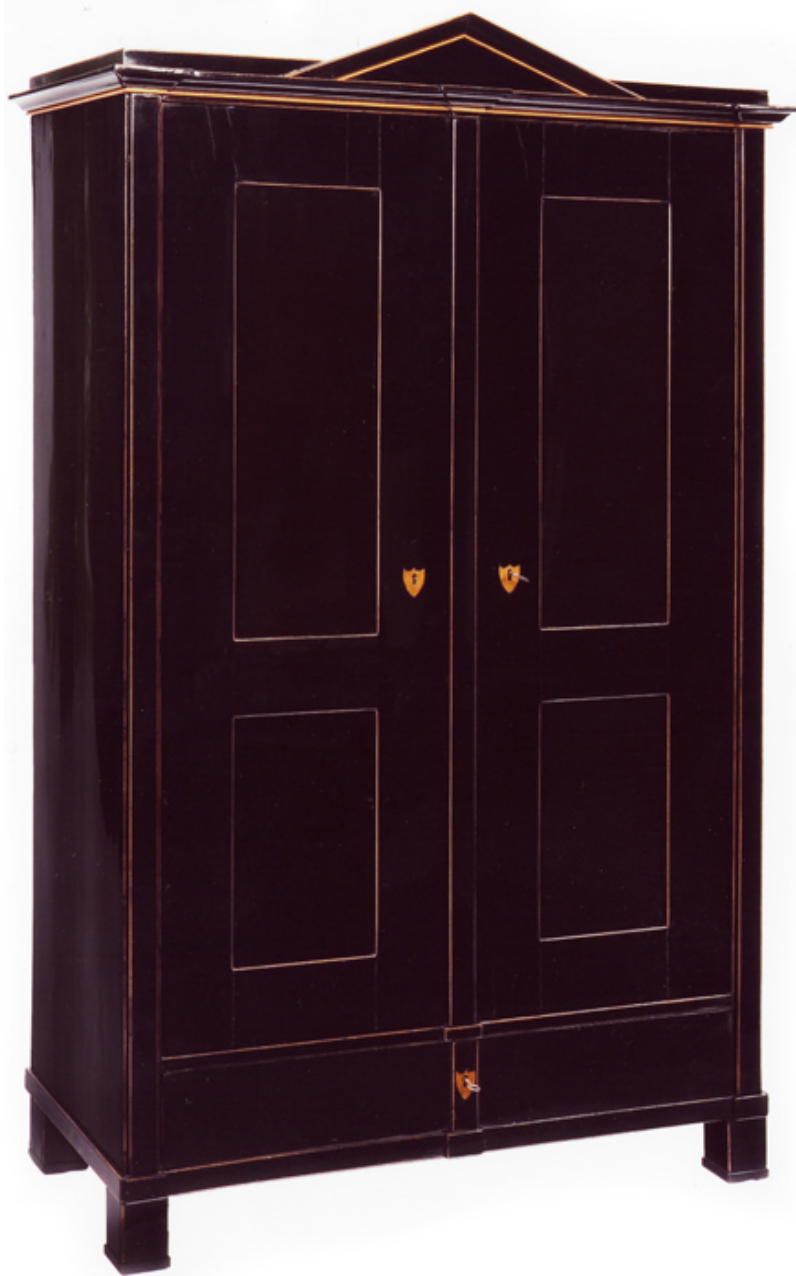


**BIEDERMEIER ARMOIRES AND VITRINES A167**



A pair of superb quality Viennese Biedermeier armoires, Exemplary for combining simplicity and elegance. Pearwood on pine and oak, ebonized. Panelled with hairlines and escutcheons inlaid with maple. Socle with a drawer over block feet. Cornice with Schinkel pediment. Original catches and locks. Before 1825. Vienna.

72" - 77 1/2" h, 45" - 47 1/2" w, 21" d

Reference: Figs. 9, 20 and page 123, catalog "Biedermeier: The Invention of Simplicity" (recent exhibition in Milwaukee).